



DIAO.

Outstanding performance –
excellent control.

For more efficiency in everyday practice.

DIAO



DIAO.

The rose-gold standard in crown, bridge and cavity preparation.

● **Sharpness means control:**

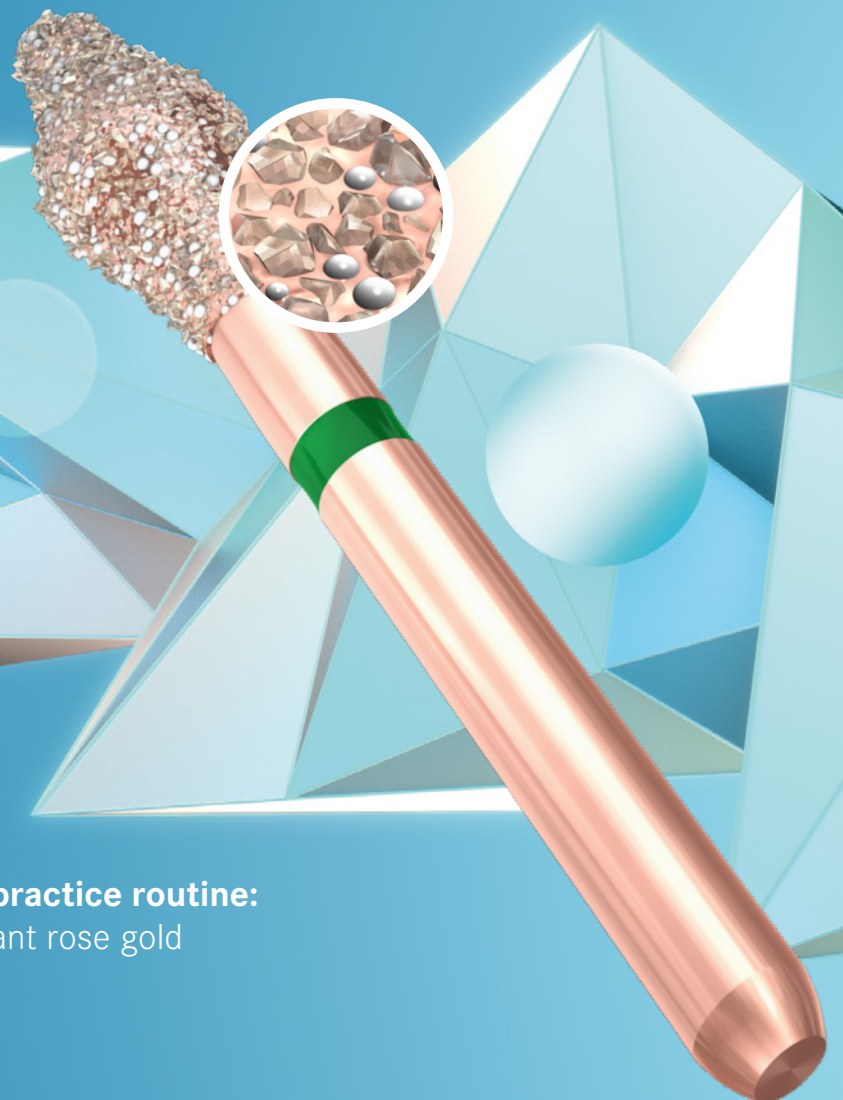
The outstanding initial cutting performance ensures optimum control and superb preparation results.

● **Concentrated power for exceptional durability**

Extremely long lasting sharpness

● **Facilitates the daily practice routine:**

Just reach out for brilliant rose gold



On average,

34 %

longer service life, and

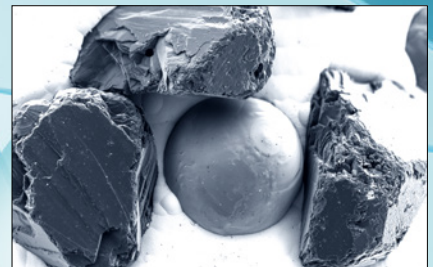
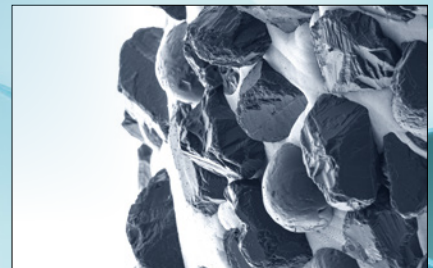
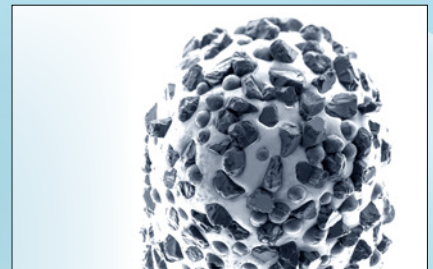
27%

greater initial sharpness compared to traditional instruments*

*Source: Komet Dental TestLab,
mechanical cutting test 2020

Efficiency, created from diamonds and pearls.

The innovative diamond coating of the DIAO burs is interspersed with ceramic pearls. Like this, the pressure exerted is concentrated on the tips of the diamond grains which greatly increases their efficiency.



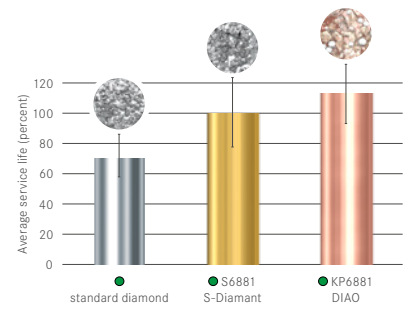


DIAO. More efficiency in everyday practice.

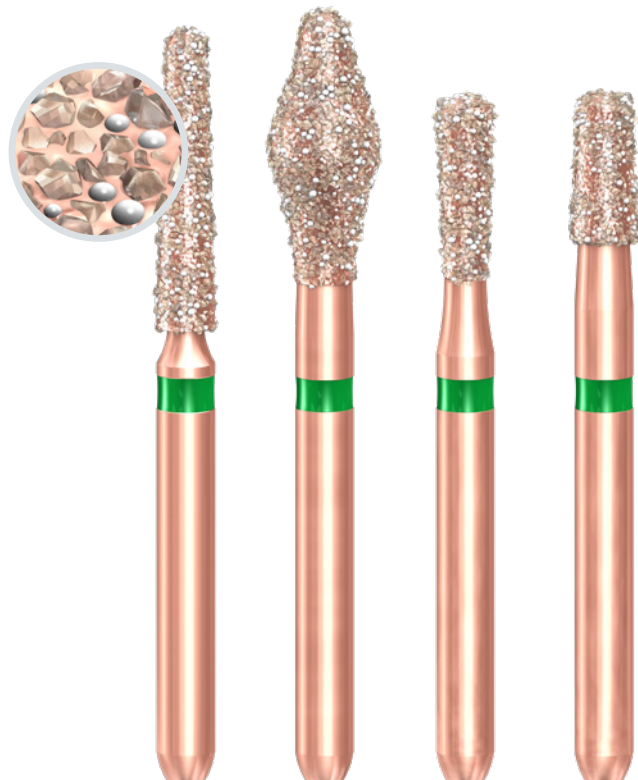
Users rave about the innovative DIAO coating for crown, bridge and cavity preparation. DIAO instruments are easy to control and retain their sharpness over a very long period of time, making treatment more effective and less tiring, and the daily workflow at the practice more efficient.

The unique DIAO rose-gold shade makes the instrument easily recognizable so it can be quickly accessed for the next treatment, making the workflow at the practice by far more efficient.

What makes the innovation of DIAO so unique? The combination of ceramic pearls and diamond grains ensures unparalleled performance and control of the instrument. The innovative diamond coating of DIAO provides a significantly longer service life than comparable instruments and also makes them easier to clean.



Comparison of durability



DIAO.

Innovation you can feel.

Concentrated cutting performance for optimum control and long lasting, effective substance removal

DIAO is much easier to handle and impresses the user with its smooth operation and the way it glides over the tooth. Although easy to control, DIAO instruments remove substance consistently and at greater speed.



Directions: for use:

- Use at an optimum speed of \varnothing_{opt} 160.000 rpm, preferably in a red-contra angle or alternatively in a turbine. Instruments that are subject to a speed limit of \varnothing_{max} 300.000 rpm are not authorized for use in a turbine. (e.g. KP6370.314.030/035 or KP6845KR.314.025 – see information on the label)
- Always provide sufficient spray cooling of at least 50 ml/min.
- For good preparation results, the surface should be smoothed with a finisher of matching shape after the initial-preparation.
- The instruments remove substance very effectively. Therefore, only low pressure (<2N) needs to be applied during work.



DIAO. The Range.

Instruments for crown preparation

Instruments with 8 mm working length

Cylinder, round edge



● KP6837KR.314.012



● KP6837KR.314.014



● KP6837KR.314.016

Cylinder round



● KP6881.314.012



● KP6881.314.014



● KP6881.314.016

Torpedo



● KP6878.314.012



● KP6878.314.014



● KP6878.314.016

Flame



● KP6862.314.012



● KP6862.314.014



● KP6862.314.016

Tapered, round edge



● KP6847KR.314.014



● KP6847KR.314.016



● KP6847KR.314.018

Tapered, round



● KP6856.314.012



● KP6856.314.014



● KP6856.314.016



● KP6856.314.018



● KP6856.314.021

Torpedo, tapered



● KP6878K.314.012



● KP6878K.314.014



● KP6878K.314.016



● KP6878K.314.018



● KP6878K.314.021

Instruments with 10 mm working length

Cylinder, round



● KP6882.314.012



● KP6882.314.014



● KP6882.314.016

Torpedo



● KP6879.314.012



● KP6879.314.014



● KP6879.314.016

Tapered, round



● KP6850.314.014



● KP6850.314.016



● KP6850.314.018

Tapered, round edge



● KP6848KR.314.014



● KP6848KR.314.016



● KP6848KR.314.018

Torped, tapered



● KP6879K.314.014



● KP6879K.314.016



● KP6879K.314.018



● KP6879K.314.021

Flame



● KP6863.314.012



● KP6863.314.014



● KP6863.314.016

Instruments with 12 mm working length

Cylinder, round



● KP6882L.314.014

Torpedo



● KP6879L.314.014

Tapered, round



● KP6856XL.314.021

Occlusal/lingual reduction

OccluShaper



● KP6370.314.030



● KP6370.314.035

Egg



● KP6379.314.018



● KP6379.314.023



● KP6379E.314.029

Bud



● KP6368.314.016



● KP6368.314.023

DIAO. The Range.

Instruments with a working length of 6 mm

Cylinder, round edge



● KP6836KR.314.012



● KP6836KR.314.014



● KP6836KR.314.016

Cylinder, round



● KP6880.314.012



● KP6880.314.014



● KP6880.314.016

Torpedo



● KP6877.314.012



● KP6877.314.014



● KP6877.314.016

Instruments for cavity preparation

Cylinder, round edge



● KP6835KR.314.012



● KP6835KR.314.014

Tapered, round edge



● KP6845KR.314.018



● KP6845KR.314.025

Round



● KP6801.314.012



● KP6801.314.014



● KP6801.314.016



● KP6801.314.018



● KP6801.314.023

Pear, round



● KP6830RL.314.012



● KP6830RL.314.014



● KP6830RL.314.016



● KP6830RL.314.018

Pear, long



● KP6830L.314.012



● KP6830L.314.014



● KP6830L.314.016



● KP6830L.314.018



● KP6830L.315.014

Komet Dental

Gebr. Brasseler GmbH & Co. KG
Trophagener Weg 25 · 32657 Lemgo
Postfach 160 · 32631 Lemgo · Germany

Verkauf Deutschland:

Telefon +49 (0) 5261 701-700
Telefax +49 (0) 5261 701-289
info@kometdental.de
www.kometdental.de

Export:

Telefon +49 (0) 5261 701-0
Telefax +49 (0) 5261 701-329
export@kometdental.de
www.kometdental.com

Komet Austria Handelsagentur GmbH
Hellbrunner Straße 15
5020 Salzburg · Austria

Telefon +43 (0) 662 829-434
Telefax +43 (0) 662 829-435
info@kometdental.at
www.kometdental.at

Brasseler®, Komet®, Art2®, CeraBur®, CeraCut®, CeraDrill®, CeraPost®, DC1®, DIAO®, FastFile®, F360®, F6 SkyTaper®, H4MC®, OccluShaper®, OptiPost®, PolyBur®, PrepMarker®, Procodile®, Procodile Q®, R6 ReziFlow® and SHAX® are registered trademarks of Gebr. Brasseler GmbH & Co. KG.

ReFlex® and EndoPilot® are registered trademarks of the company Schlumbohm GmbH & Co. KG

Some of the products and designations mentioned in the text are trademarked, patented or copyrighted. The absence of a special reference or the sign © should not be interpreted as the absence of legal protection.

This publication is copyrighted. All rights, also with regard to translation, reprint and reproduction (also in the form of extracts) are reserved. No part of this publication may be reproduced or reprocessed using electronic systems in any form or by any means (photocopying, microfilm or other methods) without the written permission of the editor.

Colours and products are subject to alterations.
Printing errors excepted.

As at february 2023