



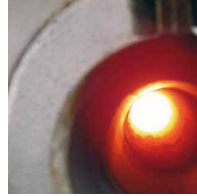
CeraLine – Instruments made of high-performance ceramics.

CeraLine

All-rounders made of high-performance ceramics are up and coming.



Quality Products
Made in Germany



A multi talent on the advance

Thanks to its outstanding properties, ceramic has proved invaluable in a vast range of applications for decades. Ceramic materials are not only established in the dental field, for example for implant abutments, but also in orthopaedics, for example for ball shaped heads used in hip surgery. Ceramics are also successfully used for industrial components that are particularly prone to wear – such as axes and plain bearings – as well as in chemistry and electrical engineering.

All these are perfect reasons for making use of the impressive advantages of this material.

Outstanding properties

Thanks to its excellent properties, ceramic comes up to even the highest expectations. It is highly resistant to pressure, to wear and tear and to aggressive chemical substances. The favourable electric and magnetic characteristics of ceramics are used in a variety of applications. The ceramic instruments contained in Komet's CeraLine series are made of special, high performance ceramics composed of zircon-dioxide ceramic partly stabilized by yttrium and aluminium ceramic. The mixture of these two established materials provides CeraLine with an above-average bending strength of 2,000 MPa.

In comparison, the bending strength of zirconium oxide ceramic which is used, amongst other things, for the manufacture of root posts, is 1,200 MPa. It is this special mixture that allows this material to be used in the manufacture of rotary cutting instruments.

The HIP production process (Hot-Isostatic-Pressing) further densifies the material.

Biocompatible

Ceramic is distinguished by its great biocompatibility. The ceramic material is resistant to corrosion.

Treatment with CeraLine instruments protects the patient from material related exposure. The ceramic instruments provided by Komet ideally complement the strategy of a completely metal-free implantation.

Attention:

Always use brushes with non-metal bristles (e.g. 9873) for cleaning all CeraLine instruments. Metal bristles may cause metal abrasion which might settle in the pores of the sintered ceramic material. This may lead to black discoloration of the ceramic.

The future belongs to ceramics.

Instruments made of high-performance ceramics.

The modern Komet ceramic instruments are a revolution in dentistry and allow the dentist to work on bones with the utmost sensitivity.

These pioneering instruments in white are another prime example of the innovative power of the brand Komet and illustrate, once again, the legendary Komet quality.

The most outstanding features of these new ceramic instruments include reduced vibration, pleasantly smooth operation and continuous substance removal. Whether used in implantology or jaw surgery – these instruments for working on bones are a whole new experience!





CeraBur | K1SM

Round bur for the preparation of cavities.

Indications:

- Tactile excavation under complete control
- Special design to allow smooth operation almost without vibrations

Studies carried out by the University of Münster and the Queen Mary University of London confirm the outstanding quality of the CeraBur K1SM. The study conducted by the University of Münster furnished proof of the excellent performance of the CeraBur K1SM.*

The study prepared by the Queen Mary University of London showed that the service life of the K1SM is three times as long as that of a round tungsten carbide bur.**

*Private lecturer Dr. Till Dammaschke, Dr. Aleksandra Vesnić, Prof. Dr. Edgar Schäfer, Westfälische Wilhelms-Universität, Poliklinik für Zahnerhaltung, Münster;
 In vitro comparison of ceramic burs and conventional tungsten carbide burs in dentin caries excavation; *Quintessence International, Volume 39, Issue 6 (June 2008), Pages 495 - 499*
 ** Mr. Nawar Al-Zebari, Queen Mary University of London; Cutting efficiency and longevity of novel ceramic and conventional burs; 07/2014

Recommendations for use:

- Use at: \varnothing_{opt} 1,500 rpm with spray cooling

Enthusiastic operators confirm:

"The instrument is extremely durable. It cuts through soft, decayed dentin with absolute ease while hardly touching hard, healthy dentin!"



Set 4547.204
 Contains two instruments of each size 010, 014, 018, and 023
 Also available in shank 205 (Set 4547.205)

Hint:

The minimally invasive potential and caries removal effectiveness of the CeraBur K1SM may be increased by using it in combination with CarisolV Gel Technology. A minimally invasive approach saves time, reduces possible risks and facilitates a more direct approach to the endpoint in complex caries situations.*

New CARISOLV® System

More information and references: www.carisolvsystem.com
 Rubicon Life Science International Kundenservice on +46 31 77 80 68 20 or customer@rubiconlifescience.se








*www.carisolvsystem.com



Shank 204:

-  ● **K1SM.204.008**
-  ● **K1SM.204.010**
-  ● **K1SM.204.012**
-  ● **K1SM.204.014**
-  ● **K1SM.204.016**
-  ● **K1SM.204.018**
-  ● **K1SM.204.021**
-  ● **K1SM.204.023**
-  ● **K1SM.204.027**

Shank 205:

-  ● **K1SM.205.010**
-  ● **K1SM.205.012**
-  ● **K1SM.205.014**
-  ● **K1SM.205.016**
-  ● **K1SM.205.018**
-  ● **K1SM.205.021**
-  ● **K1SM.205.023**



Utility model, patents
DE 10 2006 018 933
EP 1 849 429

Hint:

We also recommend our self-limiting PolyBur for excavation in the vicinity of the pulp. The blades of the PolyBur blunt automatically on hard, healthy dentin.



P1.204.014/018/023

Utility model, patents
DE 10 2008 010 049 · EP 2 260 787*
*pending



CeraBur | K59

Fissure bur.

Indications:

- For controlled, tactile detection of caries
- Optimum geometry for opening fissures in the process of extended fissure sealing
- Optimum design for triangularly shaped carious lesions
- For selective removal of carious material

Recommendations for use:

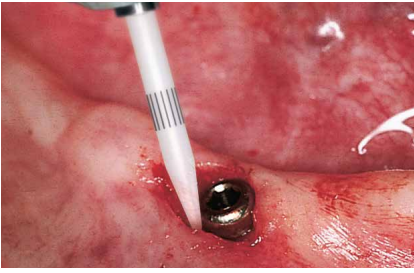
- Use at: $\text{opt. } 160,000 \text{ rpm}$ with spray cooling



● K59.314.010



Utility model, patents
DE 10 2006 042 762



CeraTip | KT

 Tissue trimmer for mucosa surgery.

Indications:

The CeraTip is suitable for use in various sectors of mucosa surgery, such as:

- Exposing intra-osseous implant sites (fig. 1)
- Dilation of the sulcus following a crown core preparation (fig. 2)
- Exposing deep cavities in the neck of the tooth
- Exposing impacted teeth
- Papillectomy/Removal of hyperplastic gingiva

Recommendations for use:

- Work gently in intermittent mode at an optimum speed of $\text{opt. } 300,000 - 450,000 \text{ rpm}$. Work with low pressure.
- Use without cooling to allow the tip of the instrument to generate the kind of heat during rotation that is required to cause thermal coagulation, i.e. to model the gingiva with a minimum of bleeding.



KT.314.016




Set 456 1



Utility model, patents
GM 120 2007 006 415
EP 1 987 798



CeraDrill | K210L16/L19/L20

 Pilot drill for use in implantology.









Indications:

- For initial preparation of an implant site
- For determination of position, direction and depth

Recommendations for use:

- Drilling with the CeraDrill pilot drills K210 should be carried out in intermittent mode using low contact pressure and constant exterior cooling with sterile physiological saline solution up to the required depth.
- Optimum speed: \odot_{opt} 800 – 1,000 rpm in the green contra-angle, Reduction at least 10 : 1
- Make sure that the drill does not jam. Do not use as a lever.



	
K210L16.204.020	L = 30,5 mm
	
K210L16.204.028	L = 32 mm
	
K210L19.204.020	L = 33,5 mm
	
K210L19.204.028	L = 33,5 mm
	
K210L20.205.020	L = 41 mm
	
K210L20.205.028	L = 41 mm
	
K210L20.205.035	L = 41 mm
	
K210L20.205.042	L = 41 mm

Depth marks at 8, 10, 12, 14 (16) mm, without instrument tip

S-shaped tip transversing blade for easy penetration

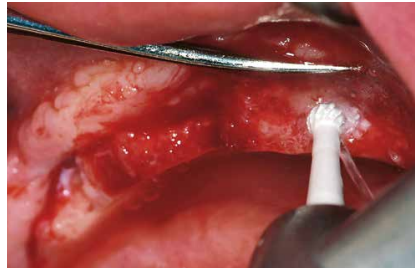
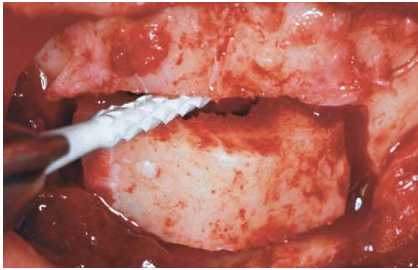
Stepped blade shoulder for low bone friction

Large chip spaces for optimal chip removal

Lasered depth marks in intervals of 2 mm, beginning at 8 mm from the tip



Utility model, patents
DE 10 2006 042 762
EP 1 539 018*
*pending



CeraBur | K157 & K160A

Bone cutters for oral surgery.

Indications:

- For the restoration of alveolar ridges – smoothing of sharp bone edges
- For the extraction of bones, e.g. from the retromolar zone for autologous bone transplantation
- For osteotomy – when exposing impacted teeth
- For surgical preparation of teeth – apical ectomy
- For root amputation

Recommendations for use:

- The CeraBone cutters are to be used in intermittent mode using low contact pressure and constant exterior cooling with sterile physiological saline solution
- Optimum speed:
☞_{opt.} 3,000 – 6,000 rpm
in the green contra-angle,
Reduction: at least 10 : 1
- K157.314.016: ☞_{opt.} 80,000 rpm
- Make sure that the cutter does not jam. Do not use as a lever.

**K157.104.016****K157.204.016****K157.205.016****K157.314.016****K160A.104.023****K160A.104.027****K160A.104.031****K160A.205.023****K160A.205.027****K160A.205.031**

Distinct tip for good axial drilling properties

Cylindrical working part to avoid jamming during the preparation

Special blade configuration for low vibration during operation and great substance removal



Komet Dental

Gebr. Brasseler GmbH & Co. KG

Trophagener Weg 25 · 32657 Lemgo

Postfach 160 · 32631 Lemgo · Germany

Verkauf Deutschland:

Telefon +49 (0) 5261 701-700

Telefax +49 (0) 5261 701-289

info@kometdental.de

www.kometdental.de

Komet Austria Handelsagentur GmbH

Hellbrunner Straße 15

5020 Salzburg · Austria

Telefon +43 (0) 662 829-434

Telefax +43 (0) 662 829-435

info@kometdental.at

www.kometdental.at

Export:

Telefon +49 (0) 5261 701-0

Telefax +49 (0) 5261 701-329

export@kometdental.de

www.kometdental.de

Brasseler®, Komet®, CeraBur®, CeraCut®, CeraDrill®, CeraFusion®, CeraPost®, CompoClip®, CompoStrip®, DC1®, DCTherm®, F360®, F6 SkyTaper®, H4MC®, MicroPlant®, OptiPost®, PolyBur®, TissueMaster®, TMC® and TissueMaster Concept® are registered trademarks of Gebr. Brasseler GmbH & Co. KG.

Some of the products and designations mentioned in the text are patented or copyrighted. The absence of a special reference or the sign ® should not be interpreted as the absence of copyright protection.

This publication is copyrighted. All rights, also with regard to translation, reprint and reproduction (also in the form of extracts) are reserved. No part of this publication may be reproduced or reprocessed using electronic systems in any form or by any means (photocopying, microfilm or other methods) without the written permission of the editor.

Colours and products are subject to alterations.
Printing errors excepted.

As at December 2017

