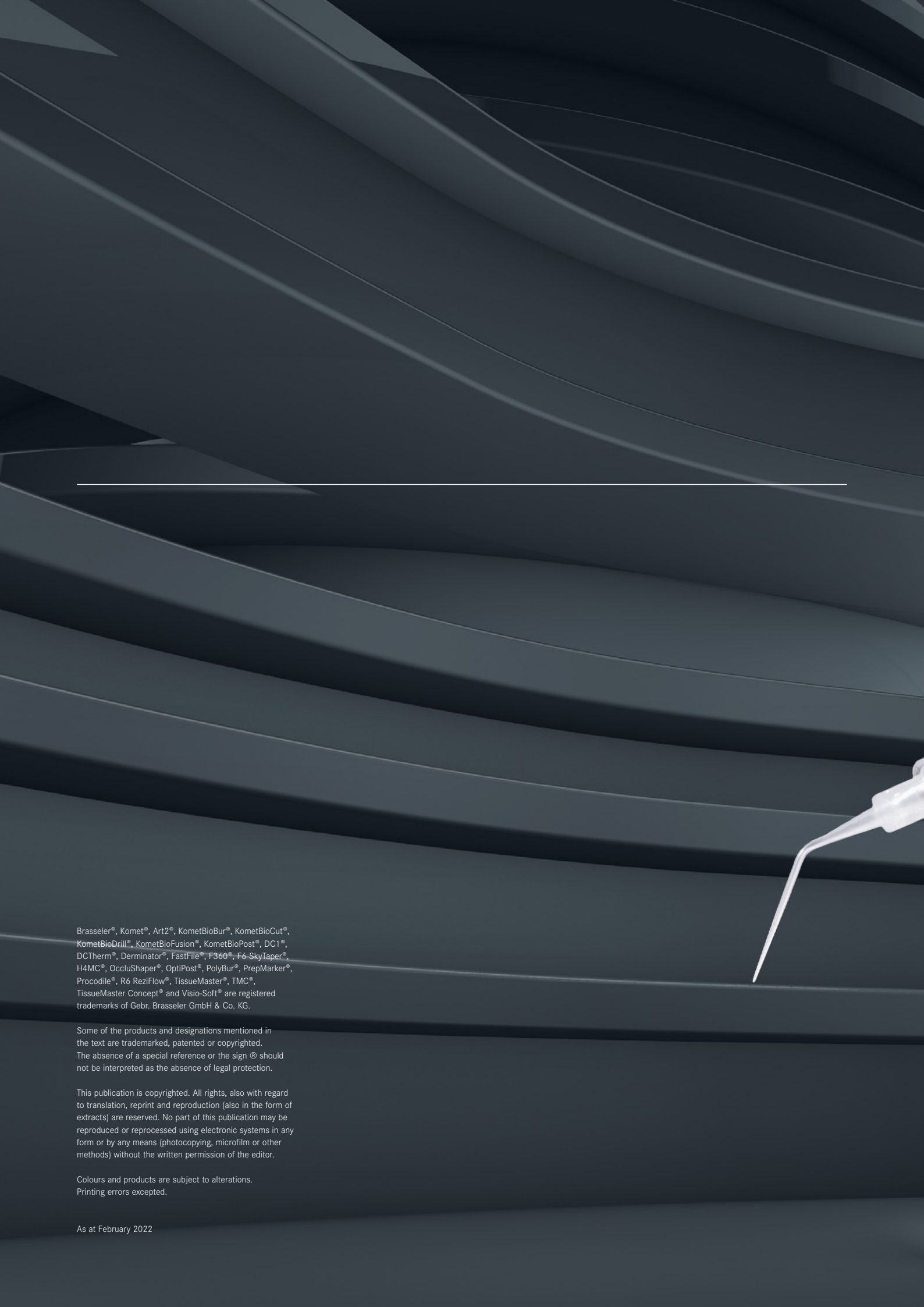




KometBioSeal.
Ease of use and a perfect seal.





Brasseler®, Komet®, Art2®, KometBioBur®, KometBioCut®, KometBioDrill®, KometBioFusion®, KometBioPost®, DC1®, DCTherm®, Derminator®, FastFile®, F360®, F6-SkyTaper®, H4MC®, OccluShaper®, OptiPost®, PolyBur®, PrepMarker®, Procodile®, R6 ReziFlow®, TissueMaster®, TMC®, TissueMaster Concept® and Visio-Soft® are registered trademarks of Gebr. Brasseler GmbH & Co. KG.

Some of the products and designations mentioned in the text are trademarked, patented or copyrighted. The absence of a special reference or the sign © should not be interpreted as the absence of legal protection.

This publication is copyrighted. All rights, also with regard to translation, reprint and reproduction (also in the form of extracts) are reserved. No part of this publication may be reproduced or reprocessed using electronic systems in any form or by any means (photocopying, microfilm or other methods) without the written permission of the editor.

Colours and products are subject to alterations. Printing errors excepted.

As at February 2022

KometBioSeal. Simply bioceramic.



KometBioSeal is a new bioceramic sealer that meets all the requirements placed on a modern root filling material.

The clinical advantages at a glance:

- excellent biocompatibility
- perfect adhesion and easy application
- antibacterial effect
- outstanding radiopacity

Why bioceramic?

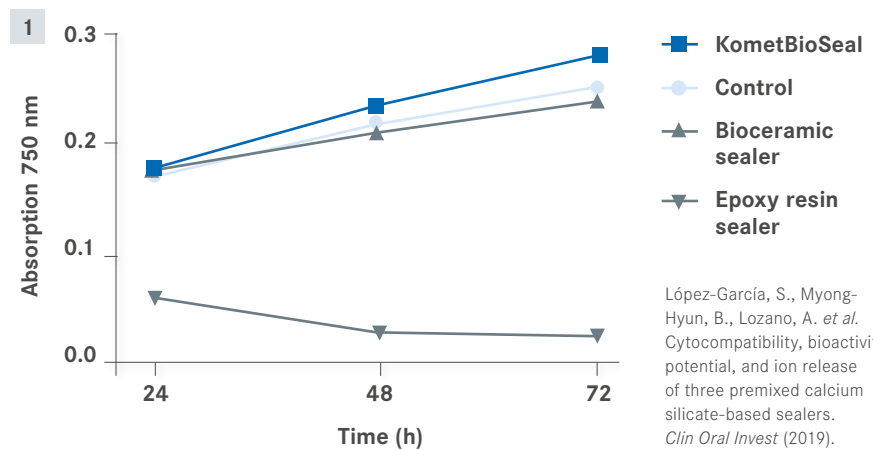
Root canal sealers mainly serve to seal voids, additional root canals and multiple foramina. What's more, endodontic sealers are intended for creating a bond between the filling material and the canal wall and for sealing off residual bacteria in the canal.

Bioceramic materials have been used in numerous other medical disciplines for many years, for example in orthopaedics. Thanks to KometBioSeal, these materials can now also be used in endodontics.

Apart from the above applications, KometBioSeal offers the following clinical advantages:

Bactericidal effect

KometBioSeal owes its excellent antibacterial effect [2] to its initially high pH value during the curing phase. This means that any bacteria that may be present in the root canal are eliminated. Thanks to its consistently high pH value that remains stable for several days, the disinfecting effect of KometBioSeal is similar to that of a calcium hydroxide insert.

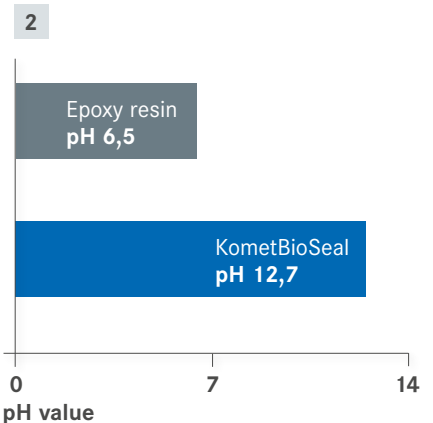


[1] Degree of biocompatibility. The light absorption measures the viability of the cells.

López-García, S., Myong-Hyun, B., Lozano, A. *et al.* Cytocompatibility, bioactivity potential, and ion release of three premixed calcium silicate-based sealers. *Clin Oral Invest* (2019).

Excellent biocompatibility

KometBioSeal is based on calcium-silicate, which is why it is particularly biocompatible after the curing phase. In addition, it emits calcium ions [1]. These properties prevent foreign body reactions and, in turn, accelerate the healing process. In addition, cells that have settled on the sealer exhibit a positive proliferation.



[2] The clearly increased pH value during the curing phase makes the bactericidal effect of KometBioSeal superior to that of sealers based on epoxy resin.



Perfect adhesion and easy application

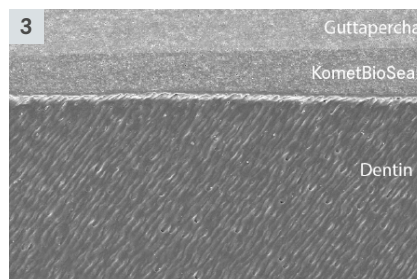
The adhesion values of KometBioSeal are similar to those of epoxy resin sealers, which facilitates a perfect adhesive bond between the dentin, KometBioSeal and the gutta-percha. Moreover, KometBioSeal has hydrophilic properties, which means that, contrary to conventional sealers based on epoxy resin, KometBioSeal uses the residual moisture in the dentinal tubules for curing. This means that, unlike epoxy resin sealers, KometBioSeal achieves its excellent adhesion values not only under ideal conditions, but also under clinical conditions.

Backed up by studies!

- KometBioSeal has an excellent biocompatibility
- Emits calcium ions, which promotes the formation of hydroxyapatite

Source:

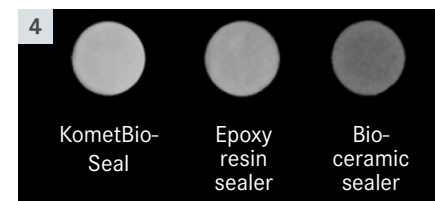
López-García, S., Myong-Hyun, B., Lozano, A. *et al.* Cytocompatibility, bioactivity potential, and ion release of three premixed calcium silicate-based sealers. *Clin Oral Invest* (2019).



[3] The material expands during the curing phase, thereby creating a gap-free bond between the dentin and the gutta-percha.

On the one hand, this makes the material both easy and safe to use, so that in combination with cold filling techniques, such as for example the single cone technique, a safe and reliable result can be achieved. On the other hand, the adhesive bond and the dimensional stability prevent an undesirable reinfection of the root canal (see scanning electron micrograph [3]).

High radiopacity



[4] The radiopacity of KometBioSeal is similar to that of conventional sealers based on epoxy resin.

The specific composition of bioceramic sealers presents a major challenge in terms of radiopacity. KometBioSeal owes its outstanding radiopacity [4] to its optimized formulation containing zirconium oxide particles. The radiopacity of KometBioSeal is similar to that of epoxy based sealers and clearly superior to other bioceramic sealers, giving the user perfect control of the treatment result.

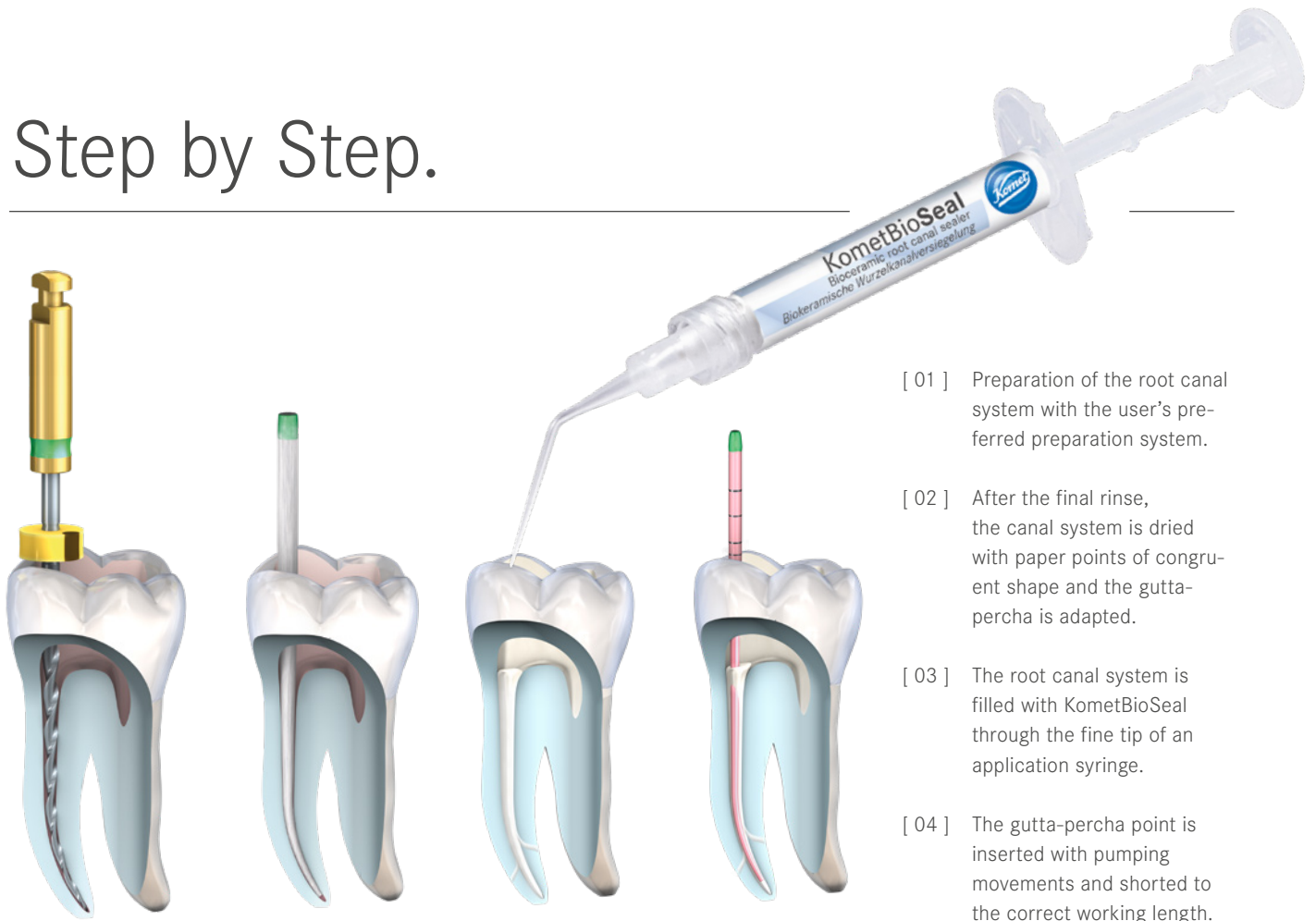


Handy hint: Discover our application video.

📱 Scan it!



Step by Step.

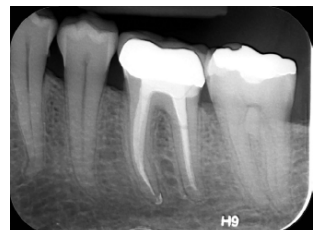


- [01] Preparation of the root canal system with the user's preferred preparation system.
- [02] After the final rinse, the canal system is dried with paper points of congruent shape and the gutta-percha is adapted.
- [03] The root canal system is filled with KometBioSeal through the fine tip of an application syringe.
- [04] The gutta-percha point is inserted with pumping movements and shorted to the correct working length.

"With its combination of superior materials and excellent workmanship, plus the simplicity of use, KometBioSeal facilitates my daily endodontic routine at the practice enormously."



Dr. David Christofzik
Specialist for endodontics and traumatology (DGET), Kiel



KometBioSeal.

The range.



BCS1 KometBioSeal
Bioceramic root filling material

Accessories for obturation:



PPF04 F360 paper points
GPF04 F360 gutta-percha points

PPSF04 F360 paper points
sterile packed in blister compartments



PPF06 F6 SkyTaper paper points
GPF06 F6 SkyTaper gutta-percha points

PPSF06 F6 SkyTaper paper points
sterile packed in blister compartments



PPR06 Procodile paper points
GPR06 Procodile gutta-percha points

PPSR06 Procodile paper points
sterile packed in blister compartments

Komet Dental

Gebr. Brasseler GmbH & Co. KG

Trophagener Weg 25 · 32657 Lemgo

Postfach 160 · 32631 Lemgo · Germany

Verkauf Deutschland:

Telefon +49 (0) 5261 701-700

Telefax +49 (0) 5261 701-289

info@kometdental.de

www.kometdental.de

Komet Austria Handelsagentur GmbH

Hellbrunner Straße 15

5020 Salzburg · Austria

Telefon +43 (0) 662 829-434

Telefax +43 (0) 662 829-435

info@kometdental.at

www.kometdental.at

Export:

Telefon +49 (0) 5261 701-0

Telefax +49 (0) 5261 701-329

export@kometdental.de

www.kometdental.de